

Test Report No.

EFSN13040364C

Test Report

Applicant	: CSP INC
Address	: 8248 W. ORANGE DR GLENDALE, AZ 85303 USA
Buyer	: KIDS' KORNER
Country of Origin	: CHINA
Test Item	: 1 sample of tool on a pencil set
Sample Description	: TOOL ON A PENCIL
Style/Model No.	: K2-302
Delivery Condition	: Apparent good, samples tested as received
Date of Receipt	: Apr. 15 th 2013; Apr. 24 th 2013
Test Period	: Apr. 15 th 2013 to Apr. 26 th 2013
Testing Location	: Shenzhen
Test Specification	: Total Lead Content - in accordance with ASTM F963-11 Standard Consumer Safety Specification for Toy Safety : Total Lead Content - according to US Consumer Product Safety Improvement Act 2008 (CPSIA).
Test Result	: PASS


Tested by:



Apr. 29th 2013

Lydia Wang
Chemical Lab Manager

Checked by:



Apr. 29th 2013

Volker Schwarz
Technical Director

Other Information / Remark:

According to the customer's requirement, only the appointed materials have been tested.

This test report is valid for the tested samples only. Without permission of the test center this test report is not permitted to be duplicated in extracts. This test report does not entitle to carry any safety mark on this or similar products.



Eurofins Testing Technology (Shenzhen) Co. Ltd.

3A, F1.6, Tianfa Building, Tian'an Cyber Park, Futian District, Shenzhen City, Guangdong, P. R. China
Tel.: +86 755 8358 5700 Fax: +86 755 8358 5701 Website: www.eurofins.com / www.pt.eurofins.com

Test Report No.
EFSN13040364C
1. Material list:

Testing material No.	Component	Material	Colour
1	Coating on pencil	Coating	Silvery
2	Coating on pencil	Coating	Golden
3	Tool	Plastic	Red
4	Tool	Plastic	Blue
5	Tool	Plastic	Yellow

2. ASTM F963-11 4.3.5.1(1), Total Lead Content in Paint and Similar Surface-coating Materials

Test method : CPSC-CH-E1003-09.1
The sample was digested with acid. Then the lead content was determined by Inductively Coupled Plasma Optical Emission Spectrometry (ICP-OES).

Limit : 90 mg/kg – according to ASTM F963-11 Standard Consumer Safety Specification for Toy Safety

Detection Limit : 10 mg/kg

Test No.	Material No.	Test result (mg/kg)
Pb-1	1	<10
Pb-2	2	<10

3. ASTM F963-11 4.3.5.2(2)(a), Total Lead Content in Accessible Component Parts

Test method : CPSC-CH-E1002-08.1
The sample was digested with acid. Then the lead content was determined by Inductively Coupled Plasma Optical Emission Spectrometry (ICP-OES).

Limit : 100 mg/kg – according to ASTM F963-11 Standard Consumer Safety Specification for Toy Safety

Detection Limit : 10 mg/kg

Test No.	Material No.	Test result (mg/kg)
Pb-3	3	<10
Pb-4	4	<10
Pb-5	5	<10

Test Report No. EFSN13040364C

4. Total Lead Content (CPSIA)

Test method : CPSC-CH-E1002-08.1; CPSC-CH-E1003-09.1
 The sample was digested with acid. Then the lead content was determined by Inductively Coupled Plasma Optical Emission Spectrometry (ICP-OES).

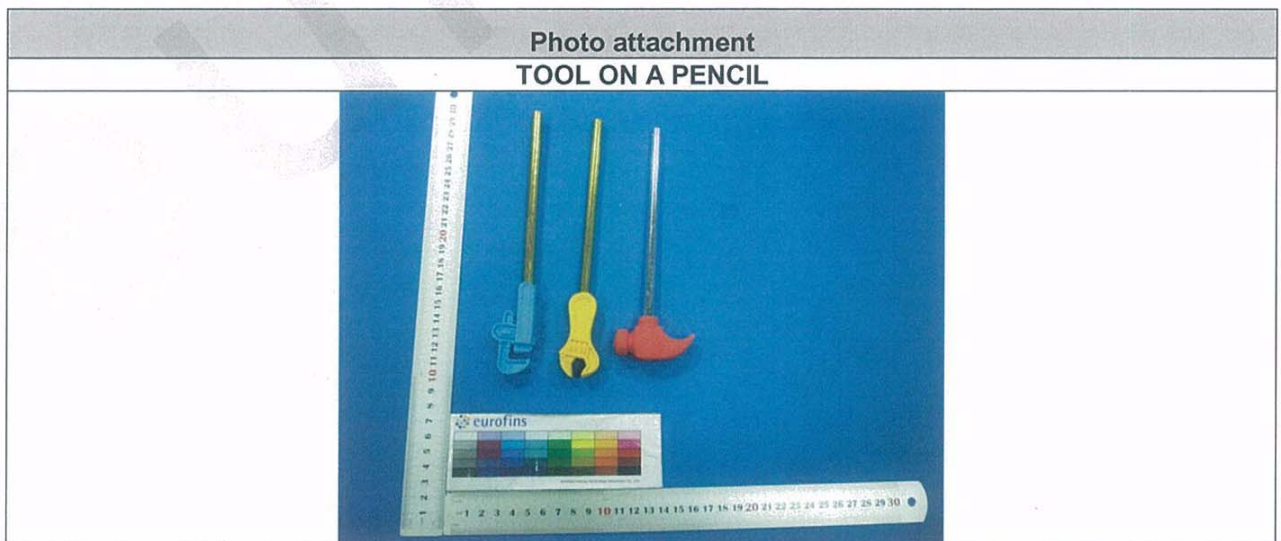
Limit : See Note 2.

Detection limit : 10 mg/kg

Test No.	Material No.	Test result (mg/kg)
Pb-1	1	<10
Pb-2	2	<10
Pb-3	3	<10
Pb-4	4	<10
Pb-5	5	<10

Note: 1. < = less than

2. Total lead content according to US Consumer Product Safety Improvement Act 2008 (CPSIA Sec.101):
 - a) For paint and similar surface coating materials in children's products, the limit for Lead has been changed to 90 ppm from August 14th 2009.
 - b) For materials other than paints and similar surface coating in children's products, the limit for Lead has been changed to 100 ppm from August 14th 2011.



--- END ---