

Test Report

Report No.: TLSZE00045023

Page 1 of 5



Applicant : CSP INC
Address : 8248 W. ORANGE DR GLENDALE, AZ 85303 USA

Report on the submitted sample(s) said to be:

Sample Name : METALLIC RING
Item/Lot No. : K16-201
Buyer : Kids'Korner
Quantity of Sample : 6 pcs
Country of Origin : China
Exported to : USA
Client Specified Age Grading : 3+
Sample Received Date : Apr.18, 2012
Sample Tested Date : Apr.18, 2012 to Apr.27, 2012


Test Conducted:

As requested by the applicant, for details refer to next page(s)

Tested by 
Approved by 

Victor Wang
Lab Manager




Date 2012-04-27

No. 27486063

Centre Testing International (Shenzhen) Co., Ltd. Hongwei Industrial Zone, Bao'an 70 District, Shenzhen, Guangdong, China

Test Report

Report No.: TLSZE00045023

Page 2 of 5

Executive Summary:

TEST REQUEST

CONCLUSION

- | | |
|---|------|
| 1) US Consumer Product Safety Improvement Act of 2008 (CPSIA) with amendment (H.R.2715) | |
| - Lead in surface-coatings and similar materials of children's products | N/A |
| - Lead in substrate materials of children's products | PASS |
| 2) European Regulation(EC) No. 1907/2006, REACH & amendment No.552/2009 Annex XVII | |
| - Cadmium and its compounds | PASS |

N/A = Not Applicable

***** For Further Details, Please Refer To the Following Page(s) *****

Test Report

Report No.: TLSZE00045023

Page 3 of 5

1) US CONSUMER PRODUCT SAFETY IMPROVEMENT ACT OF 2008 (CPSIA) WITH AMENDMENT (H.R.2715)

▼ Lead in surface-coating and similar materials of children's products.....N/A

As specified in Consumer Product Safety Improvement Act of 2008 (CPSIA) and 16 CFR Ch.II part 1303 of Consumer Product Safety Commission of U.S.A, method CPSC-CH-E1003-09 was used and total lead content was determined by ICP-OES/AAS.

N/A = Not Applicable (as received, there was no paint or similar surface-coating material on the submitted sample(s), so it is not applicable to the requirement of this standard)

▼ Lead in substrate materials of children's products

As specified in Consumer Product Safety Improvement Act of 2008 (CPSIA), method(s) CPSC-CH-E1001-08.1/CPSC-CH-E1002-08.1 were used and total lead content was determined by ICP-OES/AAS.

Tested Item	Result (ppm)						Limit (ppm)
	(1)	(2)	(3)	(4)	(5)	(6)	
Total Lead (Pb)	87	19	26	16	25	16	100

Tested Component(s):

- (1) Silver electro-plated metal
- (2) Blue electro-plated metal
- (3) Golden electro-plated metal
- (4) Red electro-plated metal
- (5) Green electro-plated metal
- (6) Mauve electro-plated metal

Remark:

- ppm = parts per million = mg/kg

Test Report

Report No.: TLSZE00045023

Page 4 of 5

**2) EUROPEAN REGULATION(EC) NO. 1907/2006, REACH & AMENDMENT NO.552/2009
ANNEX XVII**

▼ Cadmium and its compounds

As specified in entry 23, annex XVII of European regulation (EC) No. 1907/2006 (REACH) with amendments No.552/2009 & No.494/2011, method BS EN 1122:2001 Method B was used and total Cadmium content was determined by ICP-OES/AAS.

Tested Item	Result (%)						Limit (%)
	(1)	(2)	(3)	(4)	(5)	(6)	
Cadmium (Cd)	<0.0005	<0.0005	<0.0005	<0.0005	<0.0005	<0.0005	0.01

Tested Component(s):

- (1) Silver electro-plated metal
- (2) Blue electro-plated metal
- (3) Golden electro-plated metal
- (4) Red electro-plated metal
- (5) Green electro-plated metal
- (6) Mauve electro-plated metal

Remark:

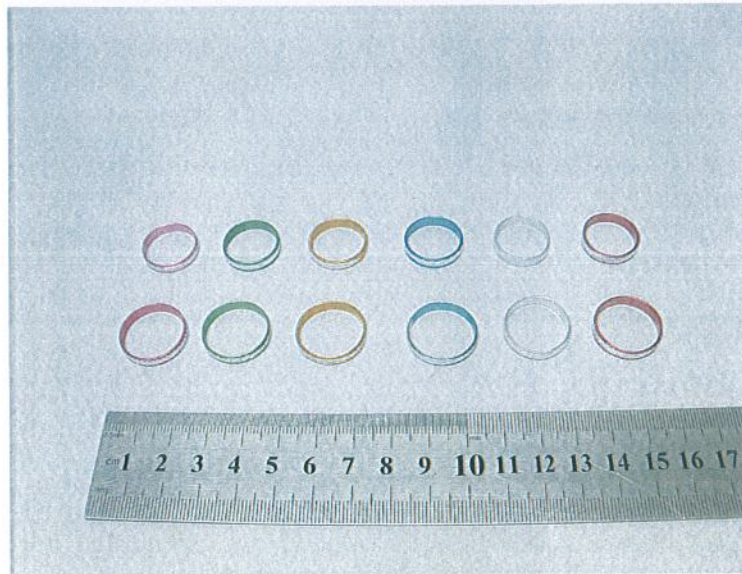
- < = Less than
- % = Percentage

Test Report

Report No.: TLSZE00045023

Page 5 of 5

Photo of the sample



*** End of report ***

The test report is effective only with both signature and specialized stamp, The result(s) shown in this report refer only to the sample(s) tested. Without written approval of CTI, this report can't be reproduced except in full.