

Test Report

Report No.: SZT10043007672B

Page 1 of 6

Applicant : CSP INC
Address : 8248 W. ORANGE DR GLENDALE, AZ 85303 USA

Report on the submitted sample said to be:

Sample Name : BEAD Necklace
Item No. : K08-915
Buyer : Kids' Korner
Country of Origin : China
Exported to : U.S.A
Labeled Age Grading : 3+
Sample Received Date : Apr.30,2010
1st Resubmitted Sample Date : Jun.01,2010
2nd Resubmitted Sample Date : Jun.08,2010
Sample Tested Date : Apr.30,2010 to Jun.11,2010

TEST REQUEST

CONCLUSION

1)US Consumer Products Safety Improvement Act 2008 (CPSIA)

- Lead in surface-coatings and similar materials of children's product
- Lead in substrate materials of children's product



PASS
PASS

2)European Regulation(EC) No. 1907/2006, REACH & amendment No.552/2009 Annex XVII

- (Item 23)Cadmium and its compounds(Formerly Known as 91/338/EEC)

PASS

Test Results: Please refer to next page(s)

Inspected by:  , Approved by:  Approved date: 2010-06-11
Engineer Victor wang
Lab Manager



Test Report

Report No.: SZT10043007672B

Page 2 of 6

1) US CONSUMER PRODUCTS SAFETY IMPROVEMENT ACT 2008 (CPSIA)

▼ LEAD IN SURFACE-COATING AND SIMILAR MATERIALS OF CHILDREN'S PRODUCT

As Specified in Consumer Products Safety Improvement Act 2008 (CPSIA) and Title 16 Part 1303 Code of Federal Regulations, Chapter II – Consumer Products Safety Commission of U.S.A, Method CPSC-CH-E1003-09 was Used and Total Lead Content was Determined by Inductively Coupled Plasma Optical Emission Spectrometer (ICP-OES).

Element	Result (ppm)	Limit
	Transparent lacquer on wood	(ppm)
Total Lead (Pb)	<5	90

Remark:

- <= Less than
- ppm= parts per million based on dry weight of sample

▼ LEAD IN SUBSTRATE MATERIALS OF CHILDREN'S PRODUCT

As Specified in Consumer Products Safety Improvement Act 2008 (CPSIA), Methods CPSC-CH-E1001-08 and CPSC-CH-E1002-08 were Used and Total Lead Content was Determined by Inductively Coupled Plasma Optical Emission Spectrometer (ICP-OES).

Element	Result (ppm)							Limit
	(1)	(2)	(3)	(4)	(5)	(6)	(7)	(ppm)
Total Lead (Pb)	130	140	<5	8	<5	<5	<5	300

Element	Result (ppm)							Limit
	(8)	(9)	(10)	(11)	(12)	(13)	(14)	(ppm)
Total Lead (Pb)	<5	<5	<5	73	<5	<5	<5	300

Element	Result (ppm)					Limit
	(15)	(16)	(17)	(18)	(19)	(ppm)
Total Lead (Pb)	<5	69	<5	<5	39	300

Building C, Hongwei Industrial Zone, Baoan 70 District, Shenzhen

Test Report

Report No.: SZT10043007672B

Page 3 of 6

Tested Components:

- (1) Silver electro-plated metal(body of lobster buckle)
- (2) Silver electro-plated metal(sliding spool of lobster buckle)
- (3) Silver electro-plated metal(spring)
- (4) Silver electro-plated metal(big bead on cord)
- (5) Silver electro-plated metal(sheet on cord)
- (6) Silver electro-plated metal(small bead on transparent cord)
- (7) Transparent plastic thread(cord)
- (8) Dk. Brown cord(cord)
- (9) Flesh wood(flesh necklace)
- (10) Brown wood(brown necklace)
- (11) White conch (brown/white/black necklace)
- (12) Dk. Brown wood(long bead, brown/white/black necklace)
- (13) Black wood(small bead, brown/white/black necklace)
- (14) Black brown wood(small bead, brown/white/black necklace)
- (15) Beige wood(necklace with brown cord)
- (16) Beige conch(necklace with brown cord)
- (17) Dk. Brown wood(bead, necklace with brown cord)
- (18) Silver electro-plated metal(clamp of lobster buckle ,necklace with transparent plastic thread)
- (19) Silver electro-plated metal(ring of lobster buckle ,necklace with transparent plastic thread)

Remark:

- \leq Less than
- ppm= parts per million based on dry weight of sample
- Results shown of tested components (1), (2) ,(5)and (19) were based on resubmitted parts material.

Test Report

Report No.: SZT10043007672B

Page 4 of 6

2)CADMIUM AND ITS COMPOUNDS

As Specified in European Regulation(EC) No. 1907/2006, REACH & amendment No.552/2009 Annex XVII, with Reference to EN1122:2001 Method B or other Appropriate Methods, and Total Cadmium Content was Performed by Inductively Coupled Plasma Optical Emission Spectrometer (ICP-OES).

Element	Result (%)				Limit (%)
	(1)	(2)	(3)	(4)	
Cadmium (Cd)	<0.0001	<0.0001	<0.0001	<0.0001	N.D.(<0.0001)

Element	Result (%)				Limit (%)
	(5)	(6)	(7)	(8)	
Cadmium (Cd)	<0.0001	<0.0001	<0.0001	<0.0001	N.D.(<0.0001)

Element	Result (%)						Limit (%)
	(9)	(10)	(11)	(12)	(13)	(14)	
Cadmium (Cd)	<0.0005	<0.0005	<0.0005	<0.0005	<0.0005	<0.0005	0.01

Element	Result (%)						Limit (%)
	(15)	(16)	(17)	(18)	(19)	(20)	
Cadmium (Cd)	<0.0005	<0.0005	<0.0005	<0.0005	<0.0005	<0.0005	0.01

Tested Components:

- (1) Silver electro-plated metal(body of lobster buckle)
- (2) Silver electro-plated metal(sliding spool of lobster buckle)
- (3) Silver electro-plated metal(spring)
- (4) Silver electro-plated metal(big bead on cord)
- (5) Silver electro-plated metal(sheet on cord)
- (6) Silver electro-plated metal(small bead on transparent cord)
- (7) Silver electro-plated metal(ring of lobster buckle ,necklace with transparent plastic thread)
- (8) Silver electro-plated metal(clamp of lobster buckle ,necklace with transparent plastic thread)
- (9) Transparent plastic thread(cord)
- (10) Dk. Brown cord(cord)
- (11) Flesh wood(flesh necklace)
- (12) Brown wood(brown necklace)

Building C, Hongwei Industrial Zone, Baoan 70 District, Shenzhen

Test Report

Report No.: SZT10043007672B

Page 5 of 6

- (13) White conch (brown/white/black necklace)
- (14) Dk. Brown wood(long bead, brown/white/black necklace)
- (15) Black wood(small bead, brown/white/black necklace)
- (16) Black brown wood(small bead, brown/white/black necklace)
- (17) Beige wood(necklace with brown cord)
- (18) Beige conch(necklace with brown cord)
- (19) Dk. Brown wood(bead, necklace with brown cord)
- (20) Transparent lacquer on wood

Remark:

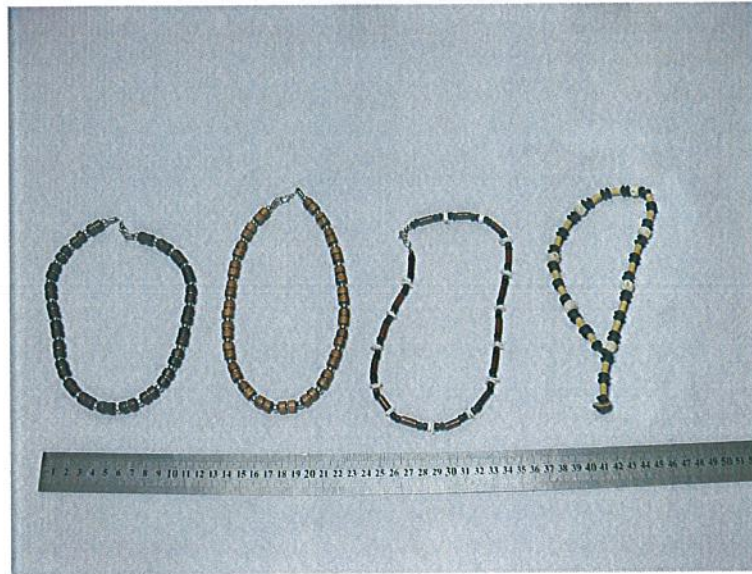
- \leq Less than
- %= Percentage based on dry weight of testing sample
- N.D. = Not Detected
- Results shown of tested components (1),(2),(5) and (7) were based on resubmitted parts material.

Test Report

Report No.: SZT10043007672B

Page 6 of 6

Photo of the sample



*** End of report ***

This report is considered invalidated without the Special Seal for Inspection of the CTI, This report shall not be altered, increased or deleted. The results shown in this test report refer only to the sample(s) tested. Without written approval of CTI, this test report shall not be copied except in full and published as advertisement.