

# Test Report

Report No.: TLSZD00020532

Page 1 of 4

**Applicant :** CSP INC  
**Address :** 8248 W. ORANGE DR GLENDALE, AZ 85303 USA

**Report on the submitted sample said to be:**

Sample Name : STACKABLE PENCILS  
Item/Lot No. : K01-101  
Buyer : Kids' Korner  
Country of Origin : CHINA  
Exported to : USA  
Client Specified Age Grading : 3+  
Sample Received Date : Apr.08,2011  
Sample Tested Date : Apr.08,2011 to Apr.22,2011



**TEST REQUEST**

**CONCLUSION**

- |  |      |
|--|------|
| 1) US Consumer Product Safety Improvement Act 2008 (CPSIA)                         |      |
| - Lead in surface-coatings and similar materials of children's product             | N/A  |
| - Lead in substrate materials of children's product                                | PASS |
| 2) European Regulation(EC) No. 1907/2006, REACH & amendment No.552/2009 Annex XVII |      |
| - (Item 23)Cadmium and its compounds(Formerly Known as 91/338/EEC)                 | PASS |

**N/A= Not Applicable**

**Test Results:** Please refer to next page(s)

Inspected by:  , Approved by:  Approved date: 2011-05-10  
Engineer Victor wang  
Lab Manager



4F, Building F, Hongwei Industrial Zone, Baoan 70 District, Shenzhen, China

# Test Report

Report No.: TLSZD00020532

Page 2 of 4

## 1) US CONSUMER PRODUCT SAFETY IMPROVEMENT ACT 2008 (CPSIA)

### ▼ LEAD IN SURFACE-COATING AND SIMILAR MATERIALS OF CHILDREN'S PRODUCT...N/A

As Specified in Consumer Product Safety Improvement Act 2008 (CPSIA) and Title 16 Part 1303 Code of Federal Regulations, Chapter II – Consumer Product Safety Commission of U.S.A, Method CPSC-CH-E1003-09 was Used and Total Lead Content was Determined by Inductively Coupled Plasma Optical Emission Spectrometer (ICP-OES).

**N/A= Not Applicable** (as received, there was no paint or similar surface-coating material on the submitted sample)

### ▼ LEAD IN SUBSTRATE MATERIALS OF CHILDREN'S PRODUCT

As Specified in Consumer Product Safety Improvement Act 2008 (CPSIA), Methods CPSC-CH-E1001-08.1 and CPSC-CH-E1002-08.1 were Used and Total Lead Content was Determined by Inductively Coupled Plasma Optical Emission Spectrometer (ICP-OES).

<u>Element</u>	<u>Result (ppm)</u>						<u>Limit</u>
	(1)	(2)	(3)	(4)	(5)	(6)	(ppm)
Total Lead (Pb)	<5	<5	<5	<5	<5	<5	300

#### Tested Components:

- (1) Transparent blue plastic
- (2) Transparent pink plastic
- (3) Transparent purple plastic
- (4) Transparent plastic(cap)
- (5) White plastic(cartridge)
- (6) Black lead

#### Remark:

- <= Less than
- ppm= parts per million based on dry weight of sample

# Test Report

Report No.: TLSZD00020532

Page 3 of 4

## 2) EUROPEAN REGULATION(EC) NO. 1907/2006, REACH & AMENDMENT NO.552/2009

### ANNEX XVII

#### ▼ CADMIUM AND ITS COMPOUNDS

As Specified in European Regulation(EC) No. 1907/2006, REACH & amendment No.552/2009 Annex XVII, with Reference to EN1122:2001 Method B or other Appropriate Methods, and Total Cadmium Content was Performed by Inductively Coupled Plasma Optical Emission Spectrometer (ICP-OES).

Element	Result (%)						Limit (%)
	(1)	(2)	(3)	(4)	(5)	(6)	
Cadmium (Cd)	<0.0005	<0.0005	<0.0005	<0.0005	<0.0005	<0.0005	0.01

#### Tested Components:

- (1) Transparent blue plastic
- (2) Transparent pink plastic
- (3) Transparent purple plastic
- (4) Transparent plastic(cap)
- (5) White plastic(cartridge)
- (6) Black lead

#### Remark:

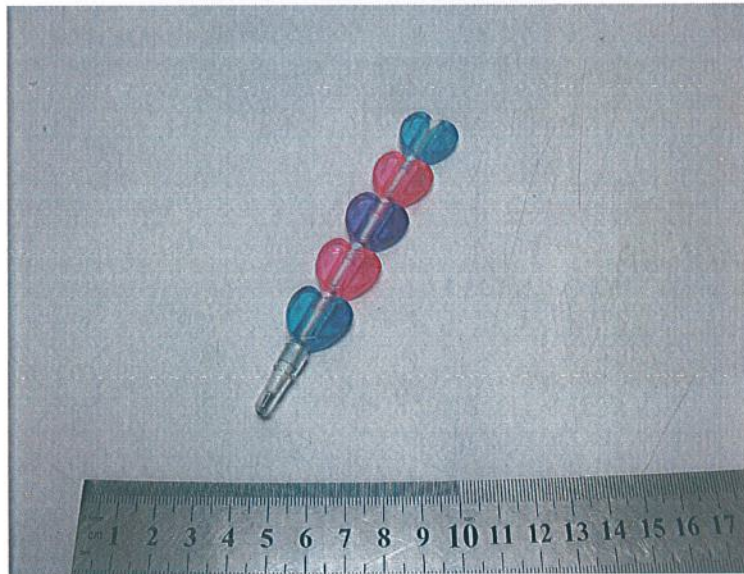
- <= Less than
- %= Percentage based on dry weight of testing sample

## Test Report

Report No.: TLSZD00020532

Page 4 of 4

### Photo of the sample



\*\*\* End of report \*\*\*

This report is considered invalidated without the Special Seal for Inspection of the CTI, This report shall not be altered, increased or deleted. The results shown in this test report refer only to the sample(s) tested. Without written approval of CTI, this test report shall not be copied except in full and published as advertisement.

