

TEST REPORT

APPLICANT : CSP INC
ADDRESS : 8248 W. ORANGE DR GLENDALE, AZ 85303 USA
SAMPLE DESCRIPTION : STICKY DART
STYLE / ITEM NO. : K16-601
BUYER : KIDS' KORNER
AGE REQUESTED ON APPLICATION FORM : 3+
LABELED AGE GRADE : NOT PRESENT
AGE GRADE APPLIED IN TESTING : OVER 3 YEARS
SAMPLE RECEIVED DATE : MAY 12, 2016
TEST PERIOD : MAY 12, 2016 TO MAY 24, 2016
RESULT SUMMARY : PLEASE REFER TO NEXT PAGE(S)

*****FOR FURTHER DETAILS, PLEASE REFER TO THE FOLLOWING PAGE(S)*****

SIGNED FOR AND ON BEHALF OF
EUROFINS TESTING TECHNOLOGY (SHENZHEN) CO. LTD.



Jamie Zhang
Toy Physical Team Leader



Harry Chen
Assistant Lab Manager



Coco Luo
Assistant Lab Manager



This test report is valid for the tested samples only. Without permission of the test center this test report is not permitted to be duplicated in extracts.
This test report does not entitle to carry any safety mark on this or similar products.

RESULT SUMMARY

| TEST(S) REQUESTED BY APPLICANT: | RESULT |
|--|--------|
| - In accordance with ASTM F963-11 Standard Consumer Safety Specification for Toy Safety: | - |
| Physical and Mechanical Test | PASS |
| Flammability Test | PASS |
| Total Lead Content and Migration of Certain Elements | PASS |
| - Total Lead Content according to US Consumer Product Safety Improvement Act 2008 (CPSIA). | PASS |
| - Total Lead Content according to US California Proposition 65, Alameda Superior Court, BG07350969 and RG08378050 / San Francisco Superior Court, 07-462991. | PASS |
| - Phthalates according to US Consumer Product Safety Improvement Act 2008 (CPSIA). | PASS |
| - Phthalates according to US California Proposition 65 and Assembly Bill AB 1108. | PASS |

TO BE CONTINUED

Eurofins Testing Technology (Shenzhen) Co. Ltd.

4/F, Building# 3, Runheng Dingfeng Industrial Park, No.1 Liuxian 3rd Road, Bao'an District, Shenzhen, P.R. China
 Tel.: +86 755 8358 5700 • Fax: +86 755 8358 5701 • Email: info.hk@eurofins.com • Website: www.eurofins.com / www.pt.eurofins.com

ASTM F963-11, Standard Consumer Safety Specification for Toy Safety

| Section | Requirement | Result |
|---------|---|--------|
| 4 | Safety Requirements | |
| 4.1 | Material Quality | P |
| 4.2 | Flammability | P |
| 4.3 | Toxicology | |
| 4.3.1 | Hazardous Substances | N/A |
| 4.3.2 | Manufacturing and Packaging of Food | N/A |
| 4.3.3 | Indirect Food Additives | N/A |
| 4.3.4 | Cosmetics | N/A |
| 4.3.5 | Total Lead Content and Migration of Certain Elements Test (See data table for detailed results.) | P |
| 4.3.6 | Cosmetics, Liquids, Pastes, Putties, Gels, and Powders | N/A |
| 4.3.7 | Stuffing Materials(Visual Inspection) | N/A |
| 4.3.8 | DEHP(DOP) | N/A |
| 4.4 | Electrical/Thermal Energy | N/A |
| 4.5 | Sound-Producing Toys | N/A |
| 4.6 | Small Objects | N/A |
| 4.7 | Accessible Edges | P |
| 4.8 | Projections | N/A |
| 4.9 | Accessible Points | P |
| 4.10 | Wires or Rods | N/A |
| 4.11 | Nails and Fasteners | N/A |
| 4.12 | Plastic Film | N/A |
| 4.13 | Folding Mechanisms and Hings | |
| 4.13.1 | Folding Mechanisms | N/A |
| 4.13.2 | Hing-Line Clearance | N/A |
| 4.14 | Cords, Straps, and Elastics | |
| 4.14.1 | Cords, Straps, and Elastics in Toys | N/A |
| 4.14.2 | Self Retracting Pull Cords | N/A |

TO BE CONTINUED

Eurofins Testing Technology (Shenzhen) Co. Ltd.

 4/F, Building# 3, Runheng Dingfeng Industrial Park, No.1 Liuxian 3rd Road, Bao'an District, Shenzhen, P.R. China
 Tel.: +86 755 8358 5700 • Fax: +86 755 8358 5701 • Email: info.hk@eurofins.com • Website: www.eurofins.com / www.pt.eurofins.com

| Section | Requirement | Result |
|---------|---|--------|
| 4.14.3 | Pull Toys | N/A |
| 4.14.4 | Strings and Lines for Flying Devices | N/A |
| 4.14.5 | Cords on Toy Bags Intended for Children Up to 18 Months | N/A |
| 4.15 | Stability and Over-Load Requirements | |
| 4.15.1 | Stability of Ride-On Toys and Toy Seats | N/A |
| 4.15.2 | Sideways Stability Requirements | N/A |
| 4.15.3 | Fore and Aft Stability | N/A |
| 4.15.4 | Stability of Stationary Floor Toys | N/A |
| 4.15.5 | Overload Requirements for Ride-On Toys and Toy Seats | N/A |
| 4.15.6 | Wheeled Ride-On Toys | N/A |
| 4.16 | Confined Spaces | |
| 4.16.1 | Ventilation | N/A |
| 4.16.2 | Closures | N/A |
| 4.16.3 | Toys that Enclose the Head | N/A |
| 4.17 | Wheels, Tires, and Axles | N/A |
| 4.18 | Holes, Clearance, and Accessibility of Mechanisms | |
| 4.18.1 | Accessible Clearances for Moveable Segments | N/A |
| 4.18.2 | Circular Holes in Rigid Materials | N/A |
| 4.18.3 | Chains and Belts | N/A |
| 4.18.4 | Inaccessibility of Mechanisms | N/A |
| 4.18.5 | Winding Keys | N/A |
| 4.18.6 | Coil Springs | N/A |
| 4.19 | Simulated Protective Devices (such as helmets, hats, and goggles) | N/A |
| 4.20 | Pacifiers | N/A |
| 4.20.1 | Pacifiers Nitrosamine Content | N/A |
| 4.21 | Projectile Toys | N/A |
| 4.22 | Teethers and Teething Toys | N/A |
| 4.23 | Rattles | N/A |
| 4.24 | Squeeze Toys | N/A |

TO BE CONTINUED

Eurofins Testing Technology (Shenzhen) Co. Ltd.

4/F, Building# 3, Runheng Dingfeng Industrial Park, No.1 Liuxian 3rd Road, Bao'an District, Shenzhen, P.R. China
 Tel.: +86 755 8358 5700 • Fax: +86 755 8358 5701 • Email: info.hk@eurofins.com • Website: www.eurofins.com / www.pt.eurofins.com

| Section | Requirement | Result |
|---------|---|--------|
| 4.25 | Battery-Operated Toys | N/A |
| 4.25.10 | Battery-Powered Ride-On Toys | N/A |
| 4.26 | Toys Intended to be Attached to a Crib or Playpen | N/A |
| 4.27 | Stuffed and Beanbag-Type Toys | N/A |
| 4.28 | Stroller and Carriage Toys | N/A |
| 4.29 | Art Materials (Label review only) | N/A |
| 4.30 | Toy Gun Marking | N/A |
| 4.31 | Balloons | N/A |
| 4.32 | Certain Toys with Spherical Ends | N/A |
| 4.33 | Marbles | N/A |
| 4.34 | Balls | N/A |
| 4.35 | Pompoms | N/A |
| 4.36 | Hemispheric-Shaped Objects | N/A |
| 4.37 | Yo Yo Elastic Tether Toys | N/A |
| 4.38 | Magnets | N/A |
| 4.39 | Jaw Entrapment in Handles and Steering Wheels | N/A |
| 5 | Labeling Requirements | |
| 5.2 | Age Grading Labeling | N/A |
| 5.3 | Safety Labeling Requirements | N/A |
| 5.4 | Aquatic Toys | N/A |
| 5.5 | Crib and Playpen Toys | N/A |
| 5.6 | Mobiles | N/A |
| 5.7 | Stroller and Carriage Toys | N/A |
| 5.8 | Toys Intended to be Assembled By and Adult | N/A |
| 5.9 | Simulated Protective Devices | N/A |
| 5.10 | Toys with Functional Sharp Edges or Points | N/A |
| 5.11 | Small Objects, Small Balls, Marbles, and Balloons | N/A |
| 5.12 | Toy Caps | N/A |

TO BE CONTINUED

Eurofins Testing Technology (Shenzhen) Co. Ltd.

4/F, Building# 3, Runheng Dingfeng Industrial Park, No.1 Liuxian 3rd Road, Bao'an District, Shenzhen, P.R. China
 Tel.: +86 755 8358 5700 • Fax: +86 755 8358 5701 • Email: info.hk@eurofins.com • Website: www.eurofins.com / www.pt.eurofins.com

| Section | Requirement | Result |
|---------|--|--------|
| 5.13 | Art Materials | N/A |
| 5.14 | Electric Toys | N/A |
| 5.15 | Battery-Operated Toys | N/A |
| 5.16 | Promotional Materials | P |
| 5.17 | Magnets | N/A |
| 6 | Instructional Literature | |
| 6.1 | Definition and Description | P |
| 6.2 | Crib and Playpen Toys | N/A |
| 6.3 | Mobiles | N/A |
| 6.4 | Toys Intended to be Assembled By a Adult | N/A |
| 6.5 | Battery-Operated Toys | N/A |
| 6.6 | Toys in Contact with Food | N/A |
| 7 | Producer's Markings | |
| 7.1 | Producer's Markings | P |
| 7.2 | Battery-Powered Ride-on Toys | N/A |
| 8 | Test methods | |
| 8.5 | Normal Use Testing | P |
| 8.7.1 | Drop Test | P |
| 8.7.2 | Tip over Test for Large, Bulky Toys | N/A |
| 8.7.3 | Tumble Test for Wheeled Toys | N/A |
| 8.7.4 | Impact Test for Toys that Cover the Face | N/A |
| 8.8 | Torque Tests for Removal of Components | P |
| 8.9 | Tension Test for Removed of Components | P |
| 8.9.1 | Tension Test for Seams in Stuffed Toys and Beanbag Type Toys | N/A |
| 8.10 | Compression Test | N/A |
| 8.11 | Tests for Tire Removal and Snap-in Wheel and Axle Assembly Removal | N/A |
| 8.12 | Flexure Test | N/A |
| 8.13 | Test for Mouth-Actuated Toys | N/A |

Note: P = Pass N/A = Not Applicable

TO BE CONTINUED

Eurofins Testing Technology (Shenzhen) Co. Ltd.

4/F, Building# 3, Runheng Dingfeng Industrial Park, No.1 Liuxian 3rd Road, Bao'an District, Shenzhen, P.R. China

Tel.: +86 755 8358 5700 • Fax: +86 755 8358 5701 • Email: info.hk@eurofins.com • Website: www.eurofins.com / www.pt.eurofins.com

Material list

| Testing material No. | Component | Material | Colour |
|----------------------|-----------|----------|-----------|
| 1 | Dart | Slime | Pink |
| 2 | Dart | Plastic | Pink |
| 3 | Dart | Slime | Dark blue |
| 4 | Dart | Plastic | Dark blue |

ASTM F963-11 4.3.5.2(2)(a), Total Lead Content in Accessible Component Parts

Test method : CPSC-CH-E1002-08.3
 The sample was digested with acid. Then the lead content was determined by Inductively Coupled Plasma Optical Emission Spectrometry (ICP-OES).

Limit : 100 mg/kg – according to ASTM F963-11 Standard Consumer Safety Specification for Toy Safety.

Detection Limit : 10 mg/kg

| Test No. | Material No. | Test result (mg/kg) |
|----------|--------------|---------------------|
| Pb-1 | 1 | N.D. |
| Pb-2 | 2 | N.D. |
| Pb-3 | 3 | N.D. |
| Pb-4 | 4 | N.D. |

Note: - 1 mg/kg = 1 ppm = 0.0001%

- N.D. = Not Detected

ASTM F963-11 4.3.5.2(2)(b), Migration of Certain Elements in Accessible Component Parts

Test method : As per ASTM F963-11, soluble toxic element contents are determined by Inductively Coupled Plasma Optical Emission Spectrometry (ICP-OES).

Detection limit : 2.5 mg/kg for each of the 8 soluble toxic elements

| Test No. | Material No. | Testing element | | | | | | | | |
|---------------------|--------------|-----------------|------|------|------|------|------|------|------|------|
| | | As | Ba | Cd | Cr | Hg | Pb | Sb | Se | |
| | | Limit (mg/kg) | | | | | | | | |
| | | 25 | 1000 | 75 | 60 | 60 | 90 | 60 | 500 | |
| Test result (mg/kg) | | | | | | | | | | |
| No. 1 | 1 | N.D. | N.D. | N.D. | N.D. | N.D. | N.D. | N.D. | N.D. | N.D. |

Note: - 1 mg/kg = 1 ppm = 0.0001%

- N.D. = Not Detected

TO BE CONTINUED

Eurofins Testing Technology (Shenzhen) Co. Ltd.

4/F, Building# 3, Runheng Dingfeng Industrial Park, No.1 Liuxian 3rd Road, Bao'an District, Shenzhen, P.R. China

Tel.: +86 755 8358 5700 • Fax: +86 755 8358 5701 • Email: info.hk@eurofins.com • Website: www.eurofins.com / www.pt.eurofins.com

Total Lead Content (CPSIA)

Test method : CPSC-CH-E1002-08.3
 The sample was digested with acid. Then the lead content was determined by Inductively Coupled Plasma Optical Emission Spectrometry (ICP-OES).

Limit : For non-surface coating (substrate): 100 ppm
 - according to US Consumer Product Safety Improvement Act 2008 (CPSIA Sec.101).

Detection limit : 10 ppm

| Test No. | Material No. | Test result (mg/kg) |
|----------|--------------|---------------------|
| Pb-1 | 1 | N.D. |
| Pb-2 | 2 | N.D. |
| Pb-3 | 3 | N.D. |
| Pb-4 | 4 | N.D. |

Note: - 1 mg/kg = 1 ppm = 0.0001%
 - N.D. = Not Detected

Total Lead Content (California Proposition 65)

Test method : CPSC-CH-E1002-08.3
 The sample was digested with acid. Then the lead content was determined by Inductively Coupled Plasma Optical Emission Spectrometry (ICP-OES).

Limit : a. PVC component: \leq 200 ppm, and
 b. Non-PVC component: \leq 600 ppm, and
 c. Baby bibs: \leq 200 ppm
 - according to US California Proposition 65, Alameda Superior Court, BG07350969 and RG08378050 / San Francisco Superior Court, 07-462991.

Detection limit : 10 mg/kg

| Test No. | Material No. | Test result (mg/kg) |
|----------|--------------|---------------------|
| Pb-1 | 1 | N.D. |
| Pb-2 | 2 | N.D. |
| Pb-3 | 3 | N.D. |
| Pb-4 | 4 | N.D. |

Note: - 1 mg/kg = 1 ppm = 0.0001%
 - N.D. = Not Detected

TO BE CONTINUED

Eurofins Testing Technology (Shenzhen) Co. Ltd.

4/F, Building# 3, Runheng Dingfeng Industrial Park, No.1 Liuxian 3rd Road, Bao'an District, Shenzhen, P.R. China
 Tel.: +86 755 8358 5700 • Fax: +86 755 8358 5701 • Email: info.hk@eurofins.com • Website: www.eurofins.com / www.pt.eurofins.com

Phthalates (CPSIA)

Test method : CPSIA Sec.108, CPSC-CH-C1001-09.3.

Limit : 0.1% per substance - according to US Consumer Product Safety Improvement Act 2008 (CPSIA).

Detection limit : 0.005% per substance

A: For toys and childcare articles:

| Test No. | | | Phthalates-1 |
|------------------------------|----------|------|--------------|
| Material No. | | | 1+3 |
| Parameter | CAS No. | Unit | Test result |
| Dibutylphthalate (DBP) | 84-74-2 | % | N.D. |
| Benzylbutylphthalate (BBP) | 85-68-7 | % | N.D. |
| Diethylhexylphthalate (DEHP) | 117-81-7 | % | N.D. |

B: Additional requirements for toys and childcare articles, which can be placed in the mouth by children:

| Test No. | | | Phthalates-1 |
|----------------------------|------------|------|--------------|
| Material No. | | | 1+3 |
| Parameter | CAS No. | Unit | Test result |
| Di-n-octylphthalate (DNOP) | 117-84-0 | % | N.D. |
| Diisodecylphthalate (DIDP) | 26761-40-0 | % | N.D. |
| Diisononylphthalate (DINP) | 28553-12-0 | % | N.D. |

Note: - 1 mg/kg = 1 ppm = 0.0001%

- N.D. = Not Detected

TO BE CONTINUED

Eurofins Testing Technology (Shenzhen) Co. Ltd.

4/F, Building# 3, Runheng Dingfeng Industrial Park, No.1 Liuxian 3rd Road, Bao'an District, Shenzhen, P.R. China

 Tel.: +86 755 8358 5700 • Fax: +86 755 8358 5701 • Email: info.hk@eurofins.com • Website: www.eurofins.com / www.pt.eurofins.com

Phthalates (California Proposition 65)

Test method : CPSIA Sec.108, CPSC-CH-C1001-09.3.

Limit : See below - US California Proposition 65 and Assembly Bill AB 1108.

Detection Limit : 0.005 % per substance

| Test No. | | | Phthalates-1 |
|------------------------------|------------|------|--------------|
| Material No. | | | 1+3 |
| Parameter | CAS No. | Unit | Test result |
| Dibutylphthalate (DBP) | 84-74-2 | % | N.D. |
| Benzylbutylphthalate (BBP) | 85-68-7 | % | N.D. |
| Diethylhexylphthalate (DEHP) | 117-81-7 | % | N.D. |
| Di-n-octylphthalate (DNOP) | 117-84-0 | % | N.D. |
| Diisodecylphthalate (DIDP) | 26761-40-0 | % | N.D. |
| Diisononylphthalate (DINP) | 28553-12-0 | % | N.D. |
| Di-n-hexyl phthalate (DnHP) | 84-75-3 | % | N.D. |

Requirements:

| Ordinance | Parameter | Maximum Allowable Limit |
|----------------|------------------------------|-------------------------|
| Proposition 65 | Dibutylphthalate (DBP) | 0.1% |
| | Benzylbutylphthalate (BBP) | 0.1% |
| | Diethylhexylphthalate (DEHP) | 0.1% |
| | Diisodecylphthalate (DIDP) | 0.1% |
| | Di-n-hexyl phthalate (DnHP) | 0.1% |
| | Diisononylphthalate (DINP) | 0.1% |

| Ordinance | Parameter | Maximum Allowable Limit |
|---------------------------------------|--|-------------------------|
| Assembly Bill No. 1108 Chapter 672 | For toys and Childcare articles: | |
| | Dibutylphthalate (DBP) | 0.1% |
| | Benzylbutylphthalate (BBP) | 0.1% |
| | Diethylhexylphthalate (DEHP) | 0.1% |
| | For toys and Childcare articles intended for use by a child under three years of age if that product can be placed in the child's mouth: | |
| | Di-n-octylphthalate (DNOP) | 0.1% |
| | Diisodecylphthalate (DIDP) | 0.1% |
| | Diisononylphthalate (DINP) | 0.1% |

Note: - 1 mg/kg = 1 ppm = 0.0001%

- N.D. = Not Detected

TO BE CONTINUED

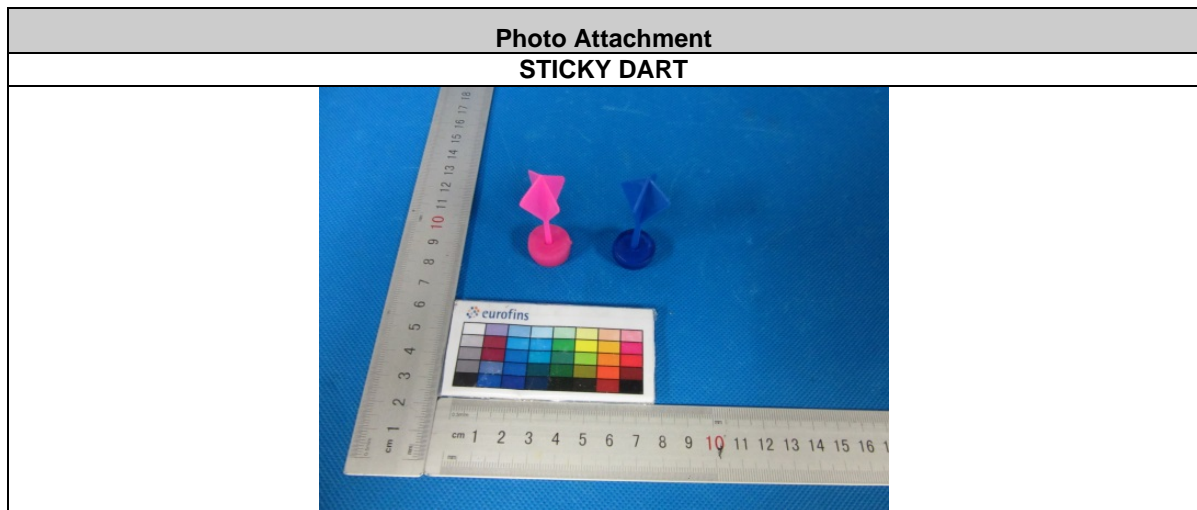
Eurofins Testing Technology (Shenzhen) Co. Ltd.

4/F, Building# 3, Runheng Dingfeng Industrial Park, No.1 Liuxian 3rd Road, Bao'an District, Shenzhen, P.R. China

 Tel.: +86 755 8358 5700 • Fax: +86 755 8358 5701 • Email: info.hk@eurofins.com • Website: www.eurofins.com / www.pt.eurofins.com

Other Information / Remark:

- According to the customer's requirement, the appointed material has been tested.



END OF THE REPORT