

TEST REPORT

APPLICANT : CSP INC
ADDRESS : 8248 W. ORANGE DR GLENDALE, AZ 85303 USA
SAMPLE DESCRIPTION : SLIDE WHISTLE
STYLE / ITEM NO. : K1-502
BUYER : KIDS' KORNER
AGE REQUESTED ON APPLICATION FORM : 3+
LABELED AGE GRADE : NOT PRESENT
AGE GRADE APPLIED IN TESTING : OVER 3 YEARS
SAMPLE RECEIVED DATE : MAR. 27, 2015; APR. 27, 2015
TEST PERIOD : MAR. 30, 2015 TO MAY 20, 2015
RESULT SUMMARY :

TEST REQUESTED	RESULT
- In accordance with ASTM F963-11 Standard Consumer Safety Specification for Toy Safety:	-
Physical and Mechanical Test	PASS
Flammability Test	PASS
Total Lead Content and Migration of Certain Elements	PASS
- Total Lead Content according to US Consumer Product Safety Improvement Act 2008 (CPSIA).	PASS

*****FOR FURTHER DETAILS, PLEASE REFER TO THE FOLLOWING PAGE(S)*****

SIGNED FOR AND ON BEHALF OF
EUROFINS TESTING TECHNOLOGY (SHENZHEN) CO. LTD.



Jamie Zhang
Toys Testing Engineer



Harry Chen
Assistant Lab Manager



Coco Luo
Assistant Lab Manager



This test report is valid for the tested samples only. Without permission of the test center this test report is not permitted to be duplicated in extracts.
This test report does not entitle to carry any safety mark on this or similar products.

ASTM F963-11, Standard Consumer Safety Specification for Toy Safety

Section	Requirement	Result
4	Safety Requirements	
4.1	Material Quality	P
4.2	Flammability	P
4.3	Toxicology	
4.3.1	Hazardous Substances	N/A
4.3.2	Manufacturing and Packaging of Food	N/A
4.3.3	Indirect Food Additives	N/A
4.3.4	Cosmetics	N/A
4.3.5	Total Lead Content and Migration of Certain Elements Test (See data table for detailed results.)	P
4.3.6	Cosmetics, Liquids, Pastes, Putties, Gels, and Powders	N/A
4.3.7	Stuffing Materials(Visual Inspection)	N/A
4.3.8	DEHP(DOP)	N/A
4.4	Electrical/Thermal Energy	N/A
4.5	Sound-Producing Toys	N/A
4.6	Small Objects	P
4.7	Accessible Edges	P
4.8	Projections	N/A
4.9	Accessible Points	P
4.10	Wires or Rods	N/A
4.11	Nails and Fasteners	N/A
4.12	Plastic Film	N/A
4.13	Folding Mechanisms and Hings	
4.13.1	Folding Mechanisms	N/A
4.13.2	Hing-Line Clearance	N/A
4.14	Cords, Straps, and Elastics	
4.14.1	Cords, Straps, and Elastics in Toys	N/A
4.14.2	Self Retracting Pull Cords	N/A

TO BE CONTINUED

Eurofins Testing Technology (Shenzhen) Co. Ltd.

4/F, Building# 3, Runheng Dingfeng Industrial Park, No.1 Liuxian 3rd Road, Bao'an District, Shenzhen, P.R. China
 Tel.: +86 755 8358 5700 • Fax: +86 755 8358 5701 • Email: info.hk@eurofins.com • Website: www.eurofins.com / www.pt.eurofins.com

Section	Requirement	Result
4.14.3	Pull Toys	N/A
4.14.4	Strings and Lines for Flying Devices	N/A
4.14.5	Cords on Toy Bags Intended for Children Up to 18 Months	N/A
4.15	Stability and Over-Load Requirements	
4.15.1	Stability of Ride-On Toys and Toy Seats	N/A
4.15.2	Sideways Stability Requirements	N/A
4.15.3	Fore and Aft Stability	N/A
4.15.4	Stability of Stationary Floor Toys	N/A
4.15.5	Overload Requirements for Ride-On Toys and Toy Seats	N/A
4.15.6	Wheeled Ride-On Toys	N/A
4.16	Confined Spaces	
4.16.1	Ventilation	N/A
4.16.2	Closures	N/A
4.16.3	Toys that Enclose the Head	N/A
4.17	Wheels, Tires, and Axles	N/A
4.18	Holes, Clearance, and Accessibility of Mechanisms	
4.18.1	Accessible Clearances for Moveable Segments	N/A
4.18.2	Circular Holes in Rigid Materials	N/A
4.18.3	Chains and Belts	N/A
4.18.4	Inaccessibility of Mechanisms	N/A
4.18.5	Winding Keys	N/A
4.18.6	Coil Springs	N/A
4.19	Simulated Protective Devices(such as helmets, hats, and goggles)	N/A
4.20	Pacifiers	N/A
4.20.1	Pacifiers Nitrosamine Content	N/A
4.21	Projectile Toys	N/A
4.22	Teethers and Teething Toys	N/A
4.23	Rattles	N/A
4.24	Squeeze Toys	N/A

TO BE CONTINUED

Eurofins Testing Technology (Shenzhen) Co. Ltd.

4/F, Building# 3, Runheng Dingfeng Industrial Park, No.1 Liuxian 3rd Road, Bao'an District, Shenzhen, P.R. China
 Tel.: +86 755 8358 5700 • Fax: +86 755 8358 5701 • Email: info.hk@eurofins.com • Website: www.eurofins.com / www.pt.eurofins.com

Section	Requirement	Result
4.25	Battery-Operated Toys	N/A
4.25.10	Battery-Powered Ride-On Toys	N/A
4.26	Toys Intended to be Attached to a Crib or Playpen	N/A
4.27	Stuffed and Beanbag-Type Toys	N/A
4.28	Stroller and Carriage Toys	N/A
4.29	Art Materials (Label review only)	N/A
4.30	Toy Gun Marking	N/A
4.31	Balloons	N/A
4.32	Certain Toys with Spherical Ends	N/A
4.33	Marbles	N/A
4.34	Balls	N/A
4.35	Pompoms	N/A
4.36	Hemispheric-Shaped Objects	N/A
4.37	Yo Yo Elastic Tether Toys	N/A
4.38	Magnets	N/A
4.39	Jaw Entrapment in Handles and Steering Wheels	N/A
5	Labeling Requirements	
5.2	Age Grading Labeling	N/A
5.3	Safety Labeling Requirements	N/A
5.4	Aquatic Toys	N/A
5.5	Crib and Playpen Toys	N/A
5.6	Mobiles	N/A
5.7	Stroller and Carriage Toys	N/A
5.8	Toys Intended to be Assembled By and Adult	N/A
5.9	Simulated Protective Devices	N/A
5.10	Toys with Functional Sharp Edges or Points	N/A
5.11	Small Objects, Small Balls, Marbles, and Balloons	N/A
5.12	Toy Caps	N/A

TO BE CONTINUED

Eurofins Testing Technology (Shenzhen) Co. Ltd.

4/F, Building# 3, Runheng Dingfeng Industrial Park, No.1 Liuxian 3rd Road, Bao'an District, Shenzhen, P.R. China
 Tel.: +86 755 8358 5700 • Fax: +86 755 8358 5701 • Email: info.hk@eurofins.com • Website: www.eurofins.com / www.pt.eurofins.com

Section	Requirement	Result
5.13	Art Materials	N/A
5.14	Electric Toys	N/A
5.15	Battery-Operated Toys	N/A
5.16	Promotional Materials	P
5.17	Magnets	N/A
6	Instructional Literature	
6.1	Definition and Description	P
6.2	Crib and Playpen Toys	N/A
6.3	Mobiles	N/A
6.4	Toys Intended to be Assembled By a Adult	N/A
6.5	Battery-Operated Toys	N/A
6.6	Toys in Contact with Food	N/A
7	Producer's Markings	
7.1	Producer's Markings	P
7.2	Battery-Powered Ride-on Toys	N/A
8	Test methods	
8.5	Normal Use Testing	P
8.7.1	Drop Test	P
8.7.2	Tipover Test for Large, Bulky Toys	N/A
8.7.3	Tumble Test for Wheeled Toys	N/A
8.7.4	Impact Test for Toys that Cover the Face	N/A
8.8	Torque Tests for Removal of Components	P
8.9	Tension Test for Removed of Components	P
8.9.1	Tension Test for Seams in Stuffed Toys and Beanbag Type Toys	N/A
8.10	Compression Test	N/A
8.11	Tests for Tire Removal and Snap-in Wheel and Axle Assembly Removal	N/A
8.12	Flexure Test	N/A
8.13	Test for Mouth-Actuated Toys	P

Note: P = Pass N/A = Not Applicable

TO BE CONTINUED

Eurofins Testing Technology (Shenzhen) Co. Ltd.

4/F, Building# 3, Runheng Dingfeng Industrial Park, No.1 Liuxian 3rd Road, Bao'an District, Shenzhen, P.R. China
 Tel.: +86 755 8358 5700 • Fax: +86 755 8358 5701 • Email: info.hk@eurofins.com • Website: www.eurofins.com / www.pt.eurofins.com

Material list

Testing material No.	Component	Material	Colour
1	Whistle	Plastic	Black
2	Coating on slide whistle	Coating	Silvery
3	Substrate of slide whistle	Plastic	Green
4	Substrate of slide whistle	Plastic	Red
5	Substrate of slide whistle	Plastic	Blue
6	Hook of slide whistle	Metal	Silvery

TO BE CONTINUED

Eurofins Testing Technology (Shenzhen) Co. Ltd.4/F, Building# 3, Runheng Dingfeng Industrial Park, No.1 Liuxian 3rd Road, Bao'an District, Shenzhen, P.R. China
Tel.: +86 755 8358 5700 • Fax: +86 755 8358 5701 • Email: info.hk@eurofins.com • Website: www.eurofins.com / www.pt.eurofins.com

ASTM F963-11 4.3.5.1(1), Total Lead Content in Paint and Similar Surface-coating Materials

Test method : CPSC-CH-E1003-09.1
 The sample was digested with acid. Then the lead content was determined by Inductively Coupled Plasma Optical Emission Spectrometry (ICP-OES).

Limit : 90 mg/kg – according to ASTM F963-11 Standard Consumer Safety Specification for Toy Safety.

Detection Limit : 10 mg/kg

Test No.	Material No.	Test result (mg/kg)
Pb-1	2	N.D.

ASTM F963-11 4.3.5.2(2)(a), Total Lead Content in Accessible Component Parts

Test method : CPSC-CH-E1001-08.3;CPSC-CH-E1002-08.3
 The sample was digested with acid. Then the lead content was determined by Inductively Coupled Plasma Optical Emission Spectrometry (ICP-OES).

Limit : 100 mg/kg – according to ASTM F963-11 Standard Consumer Safety Specification for Toy Safety.

Detection Limit : 10 mg/kg

Test No.	Material No.	Test result (mg/kg)
Pb-2	1	N.D.
Pb-3	3	N.D.
Pb-4	4	N.D.
Pb-5	5	N.D.
Pb-6	6	N.D.

Note: - 1 mg/kg = 1 ppm = 0.0001%
 - N.D. = Not Detected

TO BE CONTINUED

ASTM F963-11 4.3.5.2(2)(b). Migration of Certain Elements in Accessible Component Parts

Test method : As per ASTM F963-11, soluble toxic element contents are determined by Inductively Coupled Plasma Optical Emission Spectrometry (ICP-OES).

Detection limit : 2.5 mg/kg for each of the 8 soluble toxic elements

Test No.	Material No.	Testing element								
		As	Ba	Cd	Cr	Hg	Pb	Sb	Se	
		Limit (mg/kg)								
		25	1000	75	60	60	90	60	500	
Test result (mg/kg)										
No. 1	3	N.D.	N.D.	N.D.	N.D.	N.D.	N.D.	N.D.	N.D.	N.D.

Note: - 1 mg/kg = 1 ppm = 0.0001%
 - N.D. = Not Detected

Total Lead Content (CPSIA)

Test method : CPSC-CH-E1001-08.3; CPSC-CH-E1002-08.3; CPSC-CH-E1003-09.1
 The sample was digested with acid. Then the lead content was determined by Inductively Coupled Plasma Optical Emission Spectrometry (ICP-OES).

Limit : For surface coating materials: 90 ppm
 For non-surface coating (substrate): 100 ppm
 - according to US Consumer Product Safety Improvement Act 2008 (CPSIA Sec.101).

Detection limit : 10 ppm

Test No.	Material No.	Test result (ppm)
Pb-1	2	N.D.
Pb-2	1	N.D.
Pb-3	3	N.D.
Pb-4	4	N.D.
Pb-5	5	N.D.
Pb-6	6	N.D.

Note: - 1 mg/kg = 1 ppm = 0.0001%
 - N.D. = Not Detected

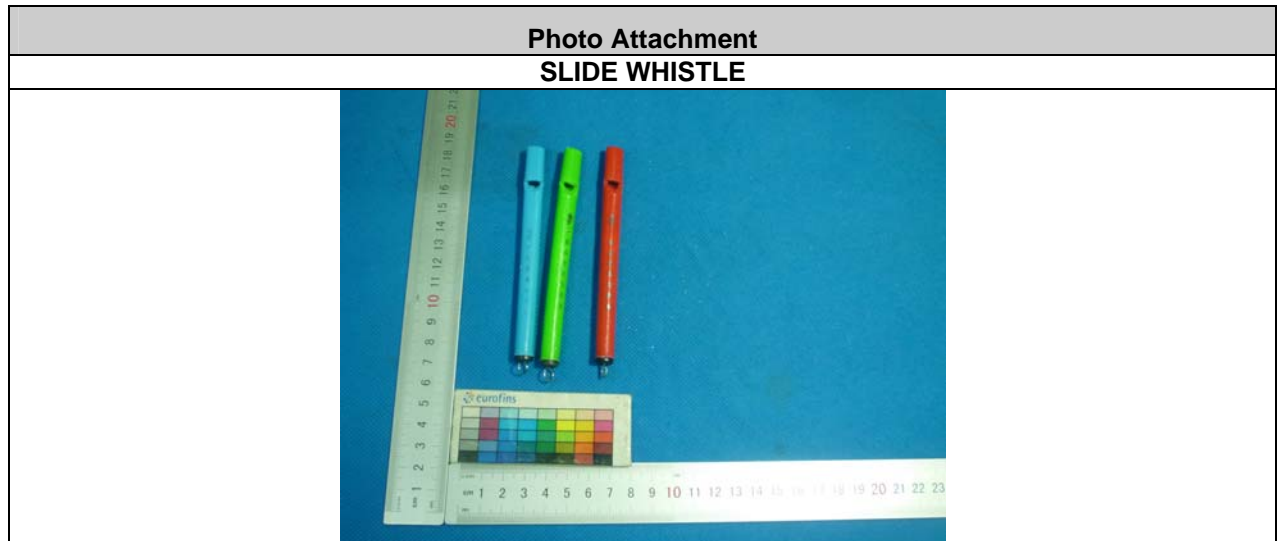
Other Information / Remark:

- According to the customer's requirement, the appointed material has been tested.

TO BE CONTINUED

Eurofins Testing Technology (Shenzhen) Co. Ltd.

4/F, Building# 3, Runheng Dingfeng Industrial Park, No.1 Liuxian 3rd Road, Bao'an District, Shenzhen, P.R. China
 Tel.: +86 755 8358 5700 • Fax: +86 755 8358 5701 • Email: info.hk@eurofins.com • Website: www.eurofins.com / www.pt.eurofins.com



END OF THE REPORT